

**North Devon Link Road – NDLR – A361
(Portmore to Borners Bridge)
Traffic Bulletin – 17.06.24**



As we are nearing the end of the project, we are having to add some additional closures to our programme and this is why we are sending out more frequent bulletins advertising these changes. Our sub contractors are utilizing the closures to maximise the work that is required to complete the project. Majority of our closures are through the night Monday to Friday however we do require some night time weekend closures that are listed in the bulletin.

From 17.06.24 to 11.07.24 on various dates, - The A361 / North Devon Link Road will be closed at night from 8pm to 6am between North Aller Roundabout and Landkey Roundabout for various works.

Please see below for the schedule and diversion route on page 3 of this bulletin.

We apologise for any inconvenience.

Landkey Roundabout to North Aller Roundabout

Start Day / Date	Finish
Mon: 17.06.24 – 8pm	Tues: 18.06.24 – 6am
Tues: 18.06.24 - 8pm	Wed: 19.06.24 - 6am
Wed: 19.06.24 – 8pm	Thur: 20.06.24 - 6am
Thur: 20.06.24 – 8pm	Fri: 21.06.24 - 6am
Fri: 21.06.24 – 8pm	Sat: 22.06.24 – 6am
Sat: 22.06.24 – 10.30pm	Sun: 23.06.24 – 6am
Sun: 23.06.24 – 8pm	Mon: 24.06.24 – 6am



North Devon Link Road – NDLR – A361 (Portmore to Borners Bridge)

Traffic Bulletin – 17.06.24

From 17.06.24 to 11.07.24 on various dates, The A361 / North Devon Link Road will be closed at night from 8pm to 6am between North Aller Roundabout and Landkey Roundabout for various works.

Please see below for schedule and diversion route on page 3 of this bulletin.

We apologise for any inconvenience.

Landkey Roundabout to North Aller Roundabout

Day / Date	Start	Finish
Mon: 01.07.24	8pm	Tues: 02.07.24 - 6am
Tues: 02.07.24	8pm	Wed: 03.07.24 - 6am
Wed: 03.07.24	8pm	Thur: 04.07.24 - 6am
Thur: 04.07.24	8pm	Fri: 05.07.24 – 6am
Fri: 05.07.24	8pm	Sat: 06.07.24 – 6am
Day / Date	Start	Finish
Mon: 08.07.24	8pm	Tues: 09.07.24 - 6am
Tues: 09.07.24	8pm	Wed: 10.07.24 – 6am
Wed: 10.07.24	8pm	Thur: 11.07.24 – 6am
Thur: 11.07.24	8pm	Fri: 12.07.24 – 6am

GRIFFITHS

For all Traffic related matters
24/7 call Traffic Safety Control
Officer (TSCO)

Tel: 07889 225393*

Your Public Liaison Officer for
the NDLR is Rebecca

Edmondson of Griffiths. She
can be contacted:

E: NDLR@alungriffiths.co.uk

T: 0330 041 4637*

Calls are monitored out of
normal work hours and a
voicemail facility is available.
Please check out our project
website :

community.alungriffiths.co.uk

If you would like to subscribe
to receive future Newsletters
and Bulletins, please click
[HERE](#) and complete the online
form for Mail Chimp. OR use
this QR code:



SCAN ME



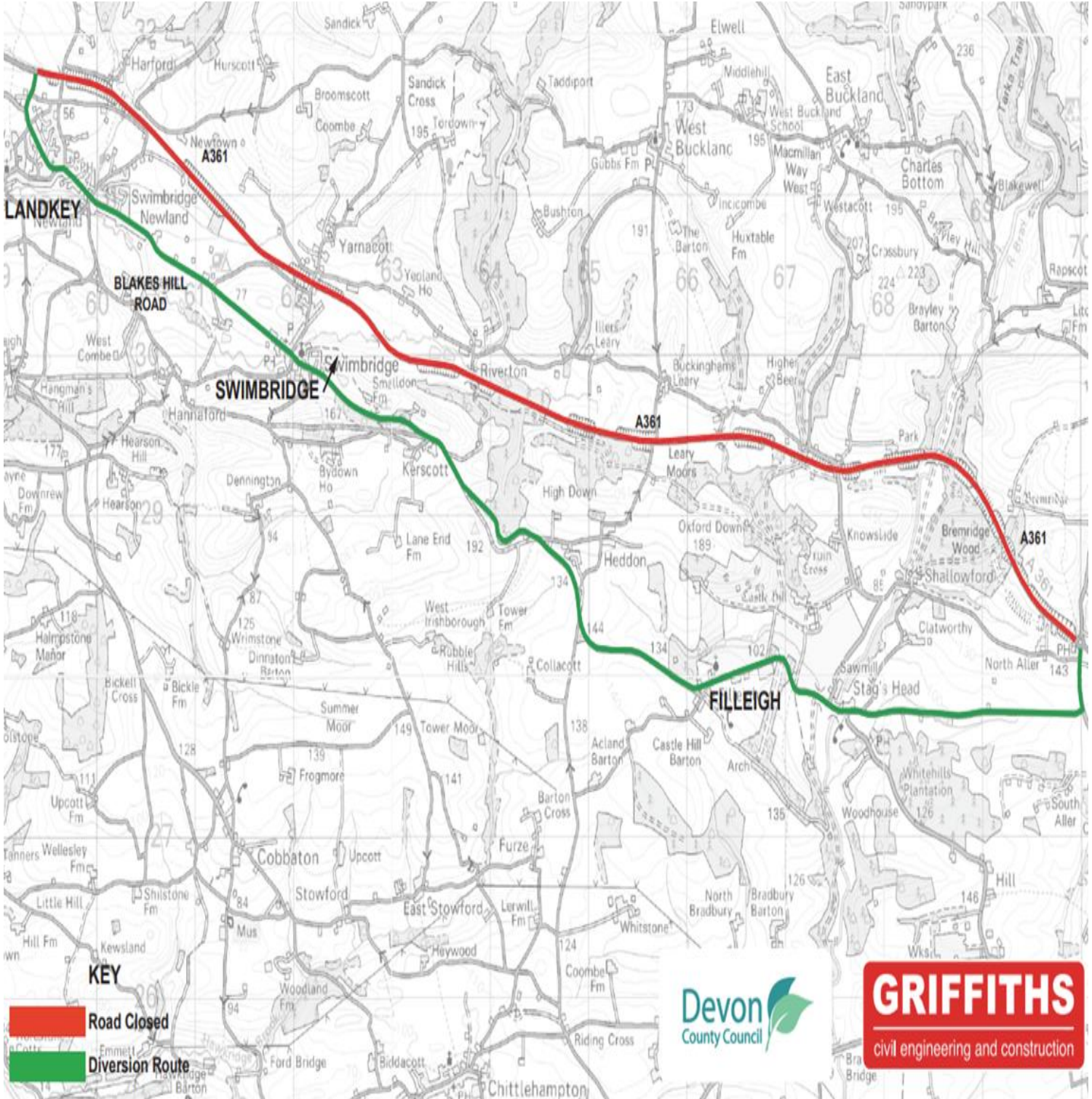
North Devon Link Road – NDLR – A361 (Portmore to Borners Bridge)

Traffic Bulletin – 17.06.24



CONSIDERATE
CONSTRUCTORS
SCHEME

Diversion Route Landkey Roundabout to North Aller Roundabout



**North Devon Link Road – NDLR – A361
(Portmore to Borners Bridge)
Traffic Bulletin – 17.06.24**



Night Closures – Bishmill to North Aller – June 2024

A full carriageway closure of the A361 between Bishmill & North Aller, including Station Rd and North Molton Spur Closure. The closure is required for the Installation of final surface course and other works between Bishmill and North Aller.

West Bound Diversion routes for Bishmill to North Aller Page 4

East Bound Diversion Route for North Aller to Bishmill Page 5

Diversion Route for North Molton Page 6

Diversion Route for Station Road Page 7

Day / Date	Start	Finish
Mon: 24.06.24	10pm	Tues: 25.06.24 – 6am
Tues: 25.06.24	10pm	Wed: 26.06.24 - 6am
Wed: 26.06.24	10pm	Thur: 27.06.24 - 6am
Thur: 27.06.24	10pm	Fri: 28.06.24 - 6am
Fri: 28.06.24	10pm	Sat: 29.06.24 - 6am

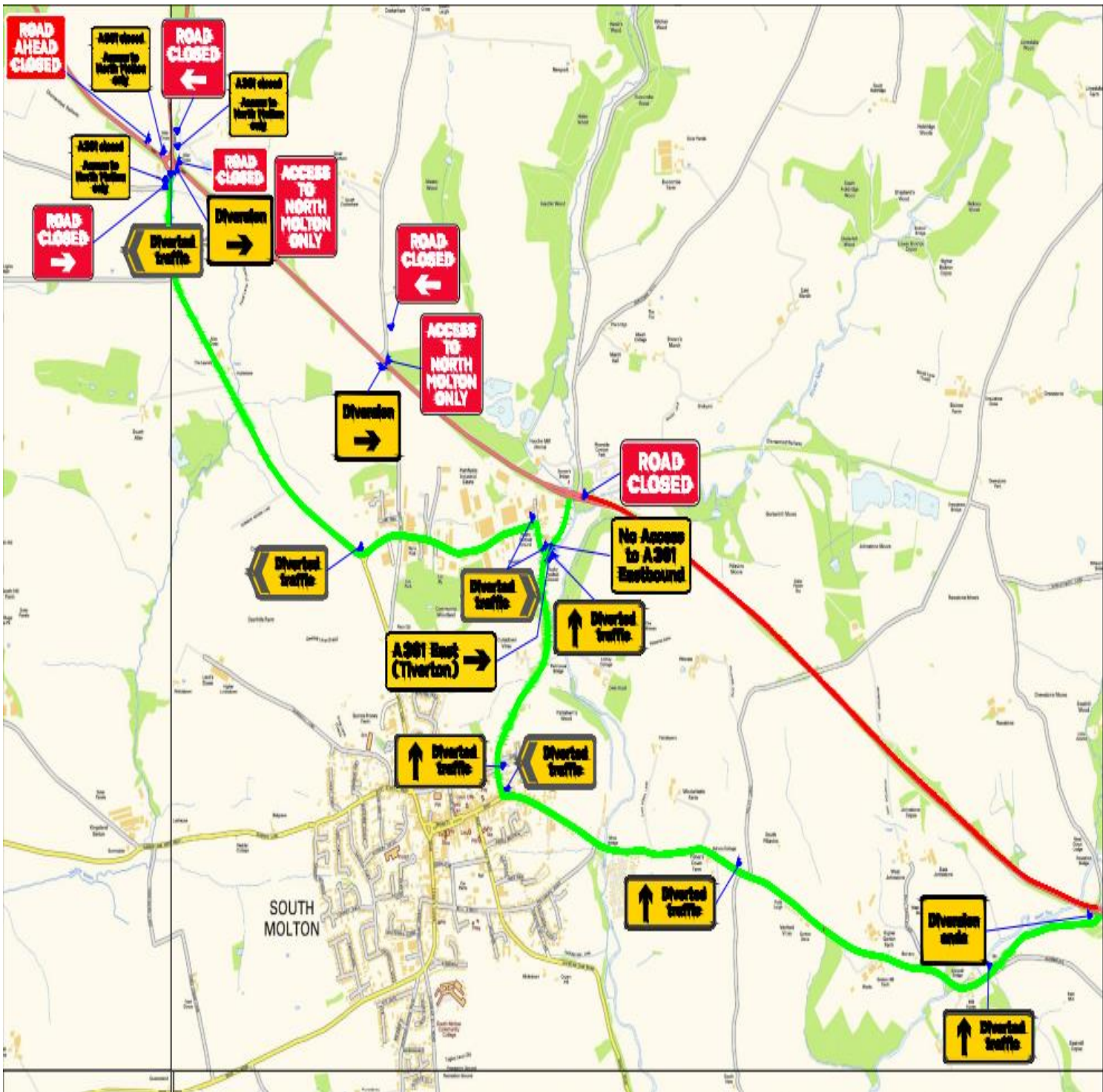
Diversion route West Bound– Bishmill to North Aller



North Devon Link Road – NDLR – A361
(Portmore to Borners Bridge)
Traffic Bulletin – 17.06.24



Diversion route East Bound– North Aller to Bishmill



Further Bulletins will be issued regularly to give more details and confirm dates



**North Devon Link Road – NDLR – A361
(Portmore to Borners Bridge)
Traffic Bulletin – 17.06.24**



Diversion route for North Molton



Full closure
from Bishmill to
North Aller

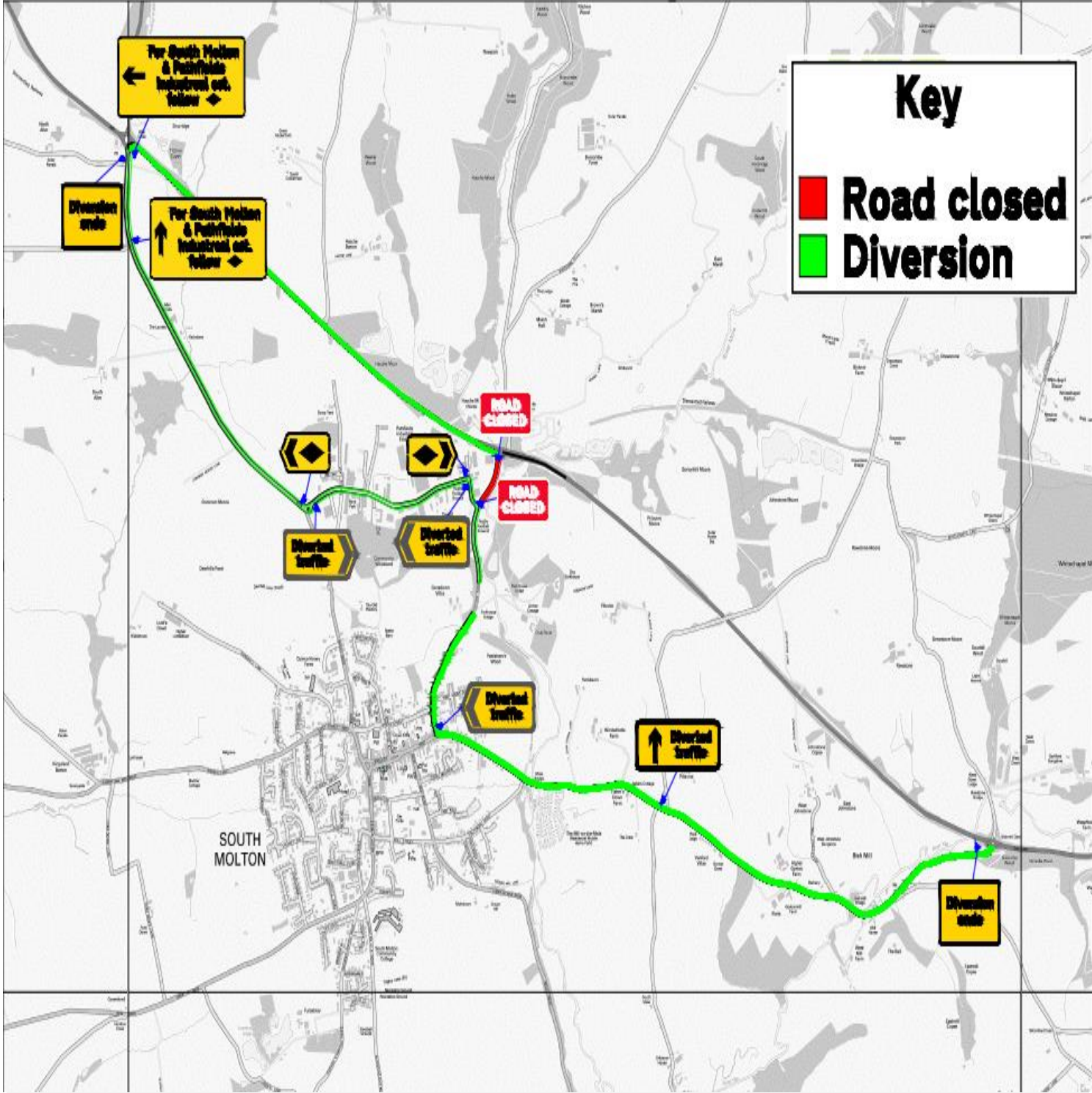
Further Bulletins will be issued regularly to give more details and confirm dates



North Devon Link Road – NDLR – A361
(Portmore to Borners Bridge)
Traffic Bulletin – 17.06.24



Diversion route for Station Road



Further Bulletins will be issued regularly to give more details and confirm dates



**North Devon Link Road – NDLR – A361
(Portmore to Borners Bridge)
Traffic Bulletin – 17.06.24**



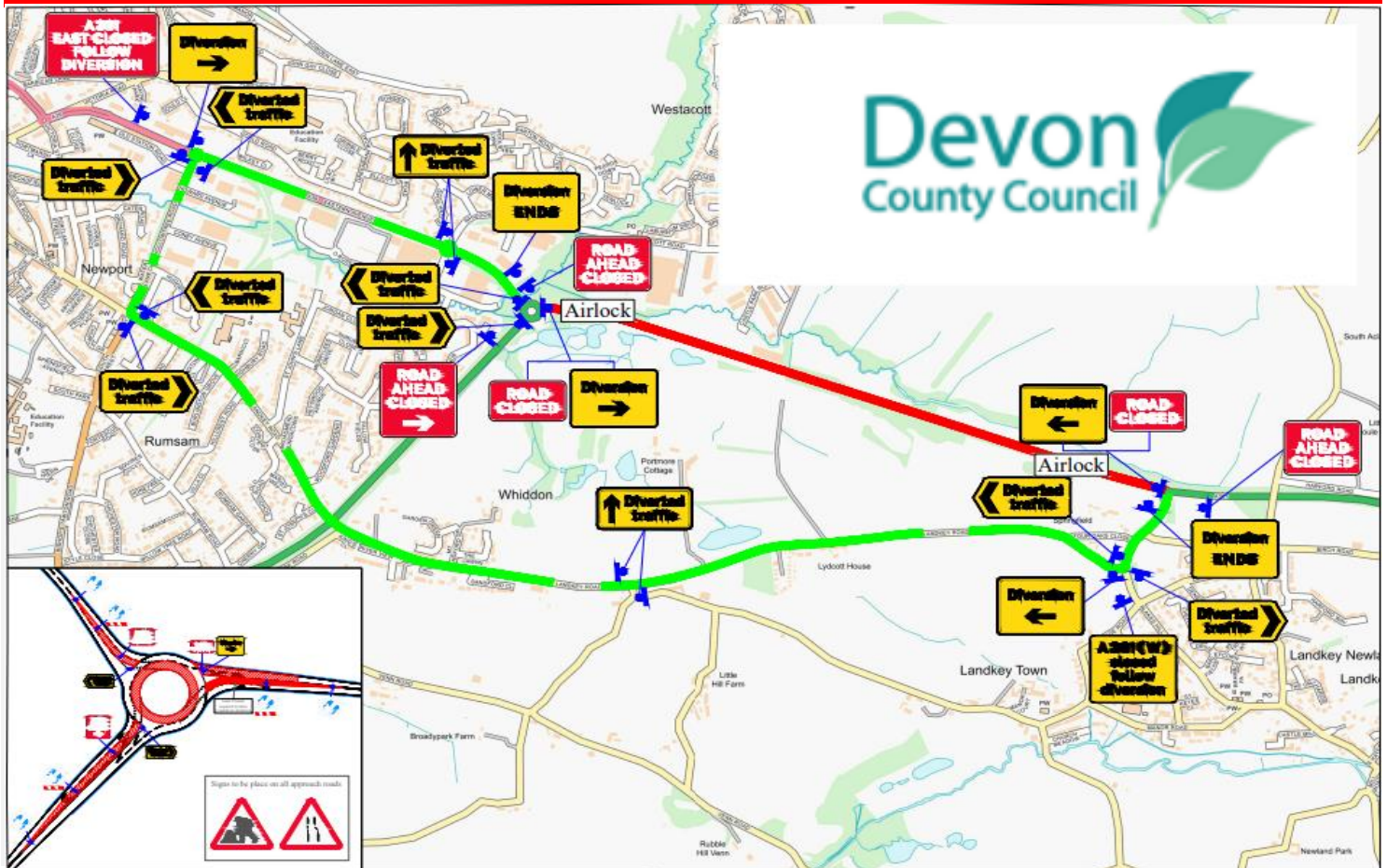
Night Closures – Landkey to Portmore – June 2024

A full carriageway closure of the A361 between Landkey Roundabout to Portmore Roundabout. The closure is required for the Installation of final surface course, footbridge handrails and other works between Landkey and Portmore.

Please see below for the schedule and diversion route.

Day / Date	Start	Finish
Mon: 24.06.24	8pm	Tues: 25.06.24 – 6am
Tues: 25.06.24	8pm	Wed: 26.06.24 - 6am
Wed: 26.06.24	8pm	Thur: 27.06.24 - 6am
Thur: 27.06.24	8pm	Fri: 28.06.24 - 6am
Fri: 28.06.24	8pm	Sat: 29.06.24 - 6am

Diversion route Landkey to Portmore



North Devon Link Road – NDLR – A361 (Portmore to Borners Bridge) Traffic Bulletin – 17.06.24

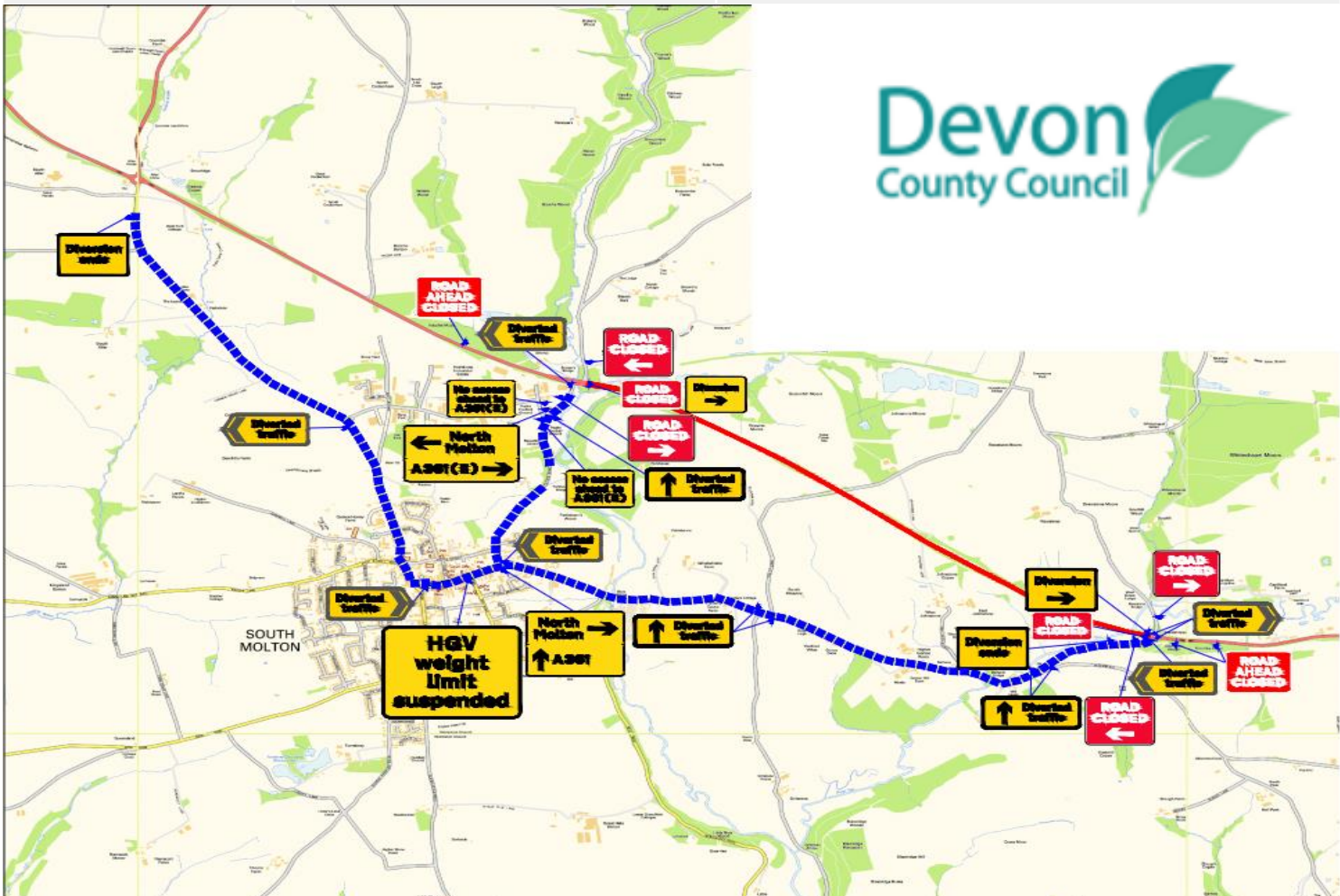


Night Closures – Bishmill to North Aller – July 2024

A full carriageway closure of the A361 between Bishmill & Borner’s Roundabout at South Molton. The closure is required for the Installation of final surface course and other works between Bishmill and Borner’s Roundabout.

Dates and Diversion routes are shown below.

Day / Date	Start	Finish
Mon: 01.07.24	8pm	Tues: 02.07.24 – 6am
Tues: 02.07.24	8pm	Wed: 03.07.24 - 6am
Wed: 03.07.24	8pm	Thur: 04.07.24 - 6am
Thur: 04.07.24	8pm	Fri: 05.07.24 – 6am
Fri: 05.07.24	8pm	Sat: 06.07.24 – 6am
Mon: 08.07.24	8pm	Tues: 09.07.24 – 6am
Tues: 09.07.24	8pm	Wed: 10.07.24 – 6am
Wed: 10.07.24	8pm	Thur: 11.07.24 – 6am
Thur: 11.07.24	8pm	Fri: 12.07.24 - 6am
Fri: 12.07.24	8pm	Sat: 13.07.24 - 6am



North Devon Link Road – NDLR – A361 (Portmore to Borners Bridge) Traffic Bulletin – 17.06.24



24 Hr Closure of Blakes Hill – July 2024

A full 24Hr closure of Blakes Hill (Landkey Roundabout to Birch Rd). The closure is required for the Installation of final surface course, signage and footpath works.

Dates / Times and Diversion routes are shown below.

Day / Date	Start	Finish
Fri: 12.07.24	10pm 24 Hrs	Mon: 15.07.24 – 5am

Diversion route – Blakes Hill

